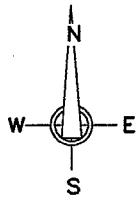
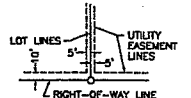


BURNETT'S RAVINE RIDGE NO. 4

CITY OF NORTH MANKATO
NICOLLET COUNTY, MINNESOTA

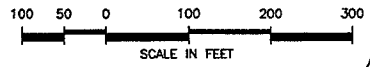


INDICATES 1/2" DIA. X 20" LONG IRON PIPE SET WITH PLASTIC CAP MARKED BY LICENSE NO. 14701.
INDICATES IRON PIPE MONUMENTS FOUND.



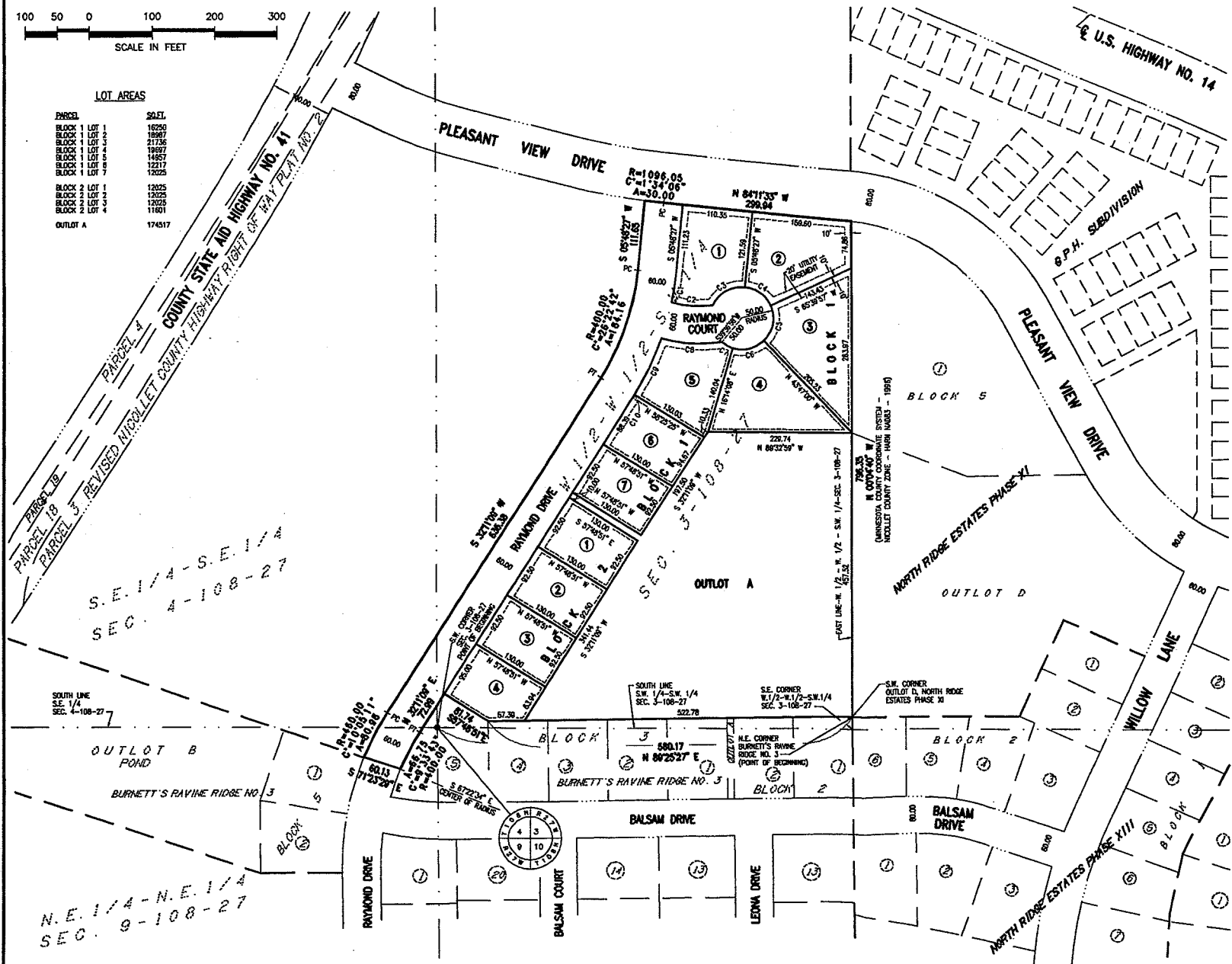
RIGHT-OF-WAY LINE BEING 5 FEET IN WIDTH AND ADJOINING LOT LINES AND BEING 10 FEET IN WIDTH AND ADJOINING RIGHT-OF-WAY LINES, UNLESS OTHERWISE INDICATED ON THE PLAT.

LEGEND
A=100.00' INDICATES ARC DISTANCE
R=100.00' INDICATES RADIUS LENGTH
C=90°00'00" INDICATES CENTRAL ANGLE
PC INDICATES POINT OF CURVATURE
PT INDICATES POINT OF TANGENCY



LOT AREAS

PARCEL	SQ.FT.
BLOCK 1 LOT 1	16250
BLOCK 1 LOT 2	18987
BLOCK 1 LOT 3	21735
BLOCK 1 LOT 4	19697
BLOCK 1 LOT 5	14857
BLOCK 1 LOT 6	12217
BLOCK 1 LOT 7	12025
BLOCK 2 LOT 1	12025
BLOCK 2 LOT 2	12025
BLOCK 2 LOT 3	12025
BLOCK 2 LOT 4	11891
OUTLET A	174517



S.E. 1/4 - S.E. 1/4
SEC. 4-108-27

N.E. 1/4 - N.E. 1/4
SEC. 9-108-27

U.S. HIGHWAY NO. 14

MINNESOTA COUNTY COORDINATE SYSTEM
NICOLLET COUNTY ZONE - 1983 (NAD 83) - 1983