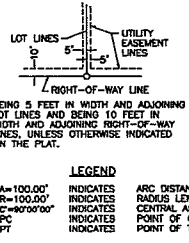
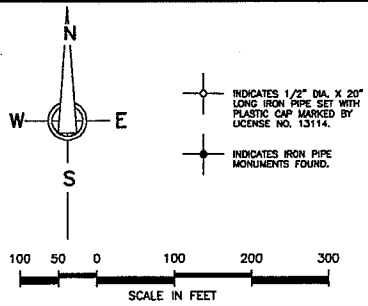
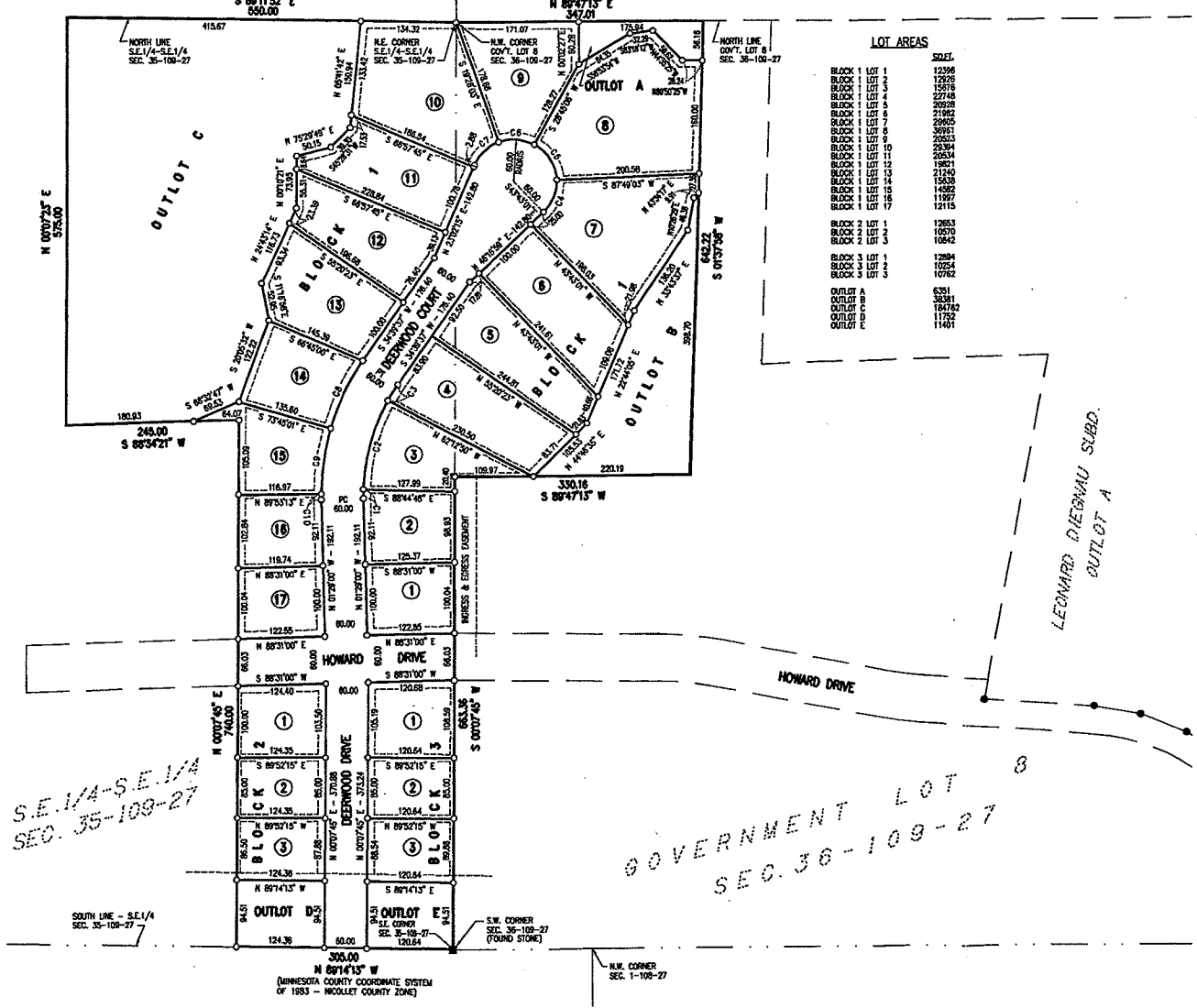


DONAHUE DEERWOOD ESTATES

CITY OF NORTH MANKATO
NICOLLET COUNTY, MINNESOTA



CURVE TABLE					
NUMBER	ARC	CHORD	CENTRAL ANGLE	RADIUS	
C1	12.90	12.89	274°12'	500.0000"E	270.00
C2	131.28	130.00	279°30'	S151°10'11"W	270.00
C3	26.14	26.13	337°47'	S31°33'13"W	270.00
C4	53.73	48.25	487°35'	N22°00'00"E	60.00
C5	61.85	58.15	693°57'	N31°32'00"E	60.00
C6	51.57	50.00	491°30'	N85°32'22"W	60.00
C7	48.68	47.34	487°36'	S45°13'13"W	60.00
C8	106.04	105.36	1874°38'	S28°27'18"W	330.00
C9	84.24	83.82	1674°55'	S20°00'00"W	330.00
C10	7.88	7.88	172°13'	S29°47'55"E	330.00



LOT AREAS

BLOCK	LOT	SQ. FT.
BLOCK 1	LOT 1	12398
BLOCK 1	LOT 2	12398
BLOCK 1	LOT 3	12516
BLOCK 1	LOT 4	27148
BLOCK 1	LOT 5	20228
BLOCK 1	LOT 6	21686
BLOCK 1	LOT 7	24905
BLOCK 1	LOT 8	30961
BLOCK 1	LOT 9	20553
BLOCK 1	LOT 10	23394
BLOCK 1	LOT 11	26334
BLOCK 1	LOT 12	18821
BLOCK 1	LOT 13	21746
BLOCK 1	LOT 14	15658
BLOCK 1	LOT 15	14582
BLOCK 1	LOT 16	11957
BLOCK 1	LOT 17	12115
BLOCK 2	LOT 1	12853
BLOCK 2	LOT 2	10570
BLOCK 2	LOT 3	10842
BLOCK 3	LOT 1	12894
BLOCK 3	LOT 2	10254
BLOCK 3	LOT 3	10762
OUTLOT A		6201
OUTLOT B		18482
OUTLOT C		11752
OUTLOT D		11401

S.E. 1/4-S.E. 1/4
SEC. 35-109-27

GOVERNMENT LOT 8
SEC. 36-109-27

LEONARD DIECKHAU SUBD.
OUTLOT A

N 89°14'15" W
MINNESOTA COUNTY COORDINATE SYSTEM
OF 1983 - NICOLLET COUNTY ZONE

N.W. CORNER
SEC. 1-109-27