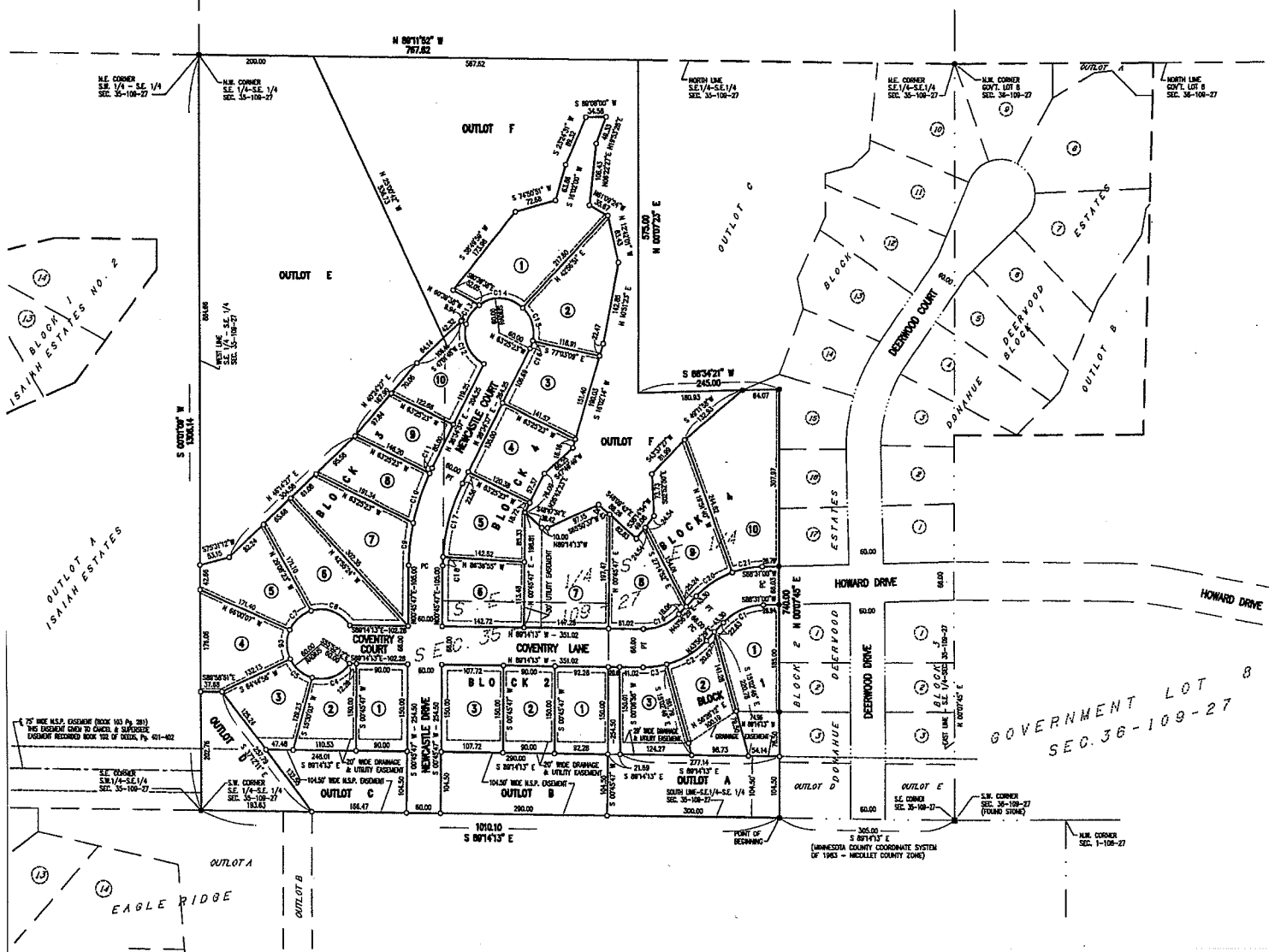


CHARLES KLINGEL SUBDIVISION

CITY OF NORTH MANKATO
NICOLLET COUNTY, MINNESOTA



GOVERNMENT LOT 8
SEC. 36-109-27

75' WIDE R.S.P. EASEMENT (BOOK 143 P. 281)
THE EASEMENT GIVEN TO CANAL & SUPPLY CO.
EASEMENT RECORDED BOOK 102 OF DEEDS, P. 474-482

MINNESOTA COUNTY COORDINATE SYSTEM
OF 1983 - NICOLLET COUNTY ZONE

EAGLE RIDGE